

NORTH END EARLY ED PROGRAM

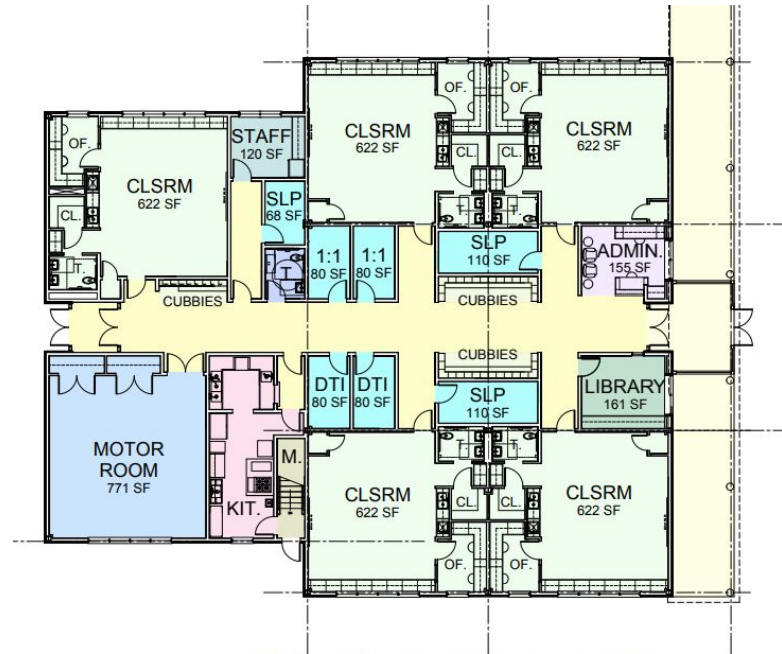
Smith Elementary School




- ❖ Satellite Pre K Program
- ❖ Connected to Smith Elementary School
- ❖ Energy Efficient Construction
 - LED Lighting
 - Heat Recovery Ventilation
 - Air Conditioning
 - Triple Glazed Windows
 - Well Insulated Building Envelope

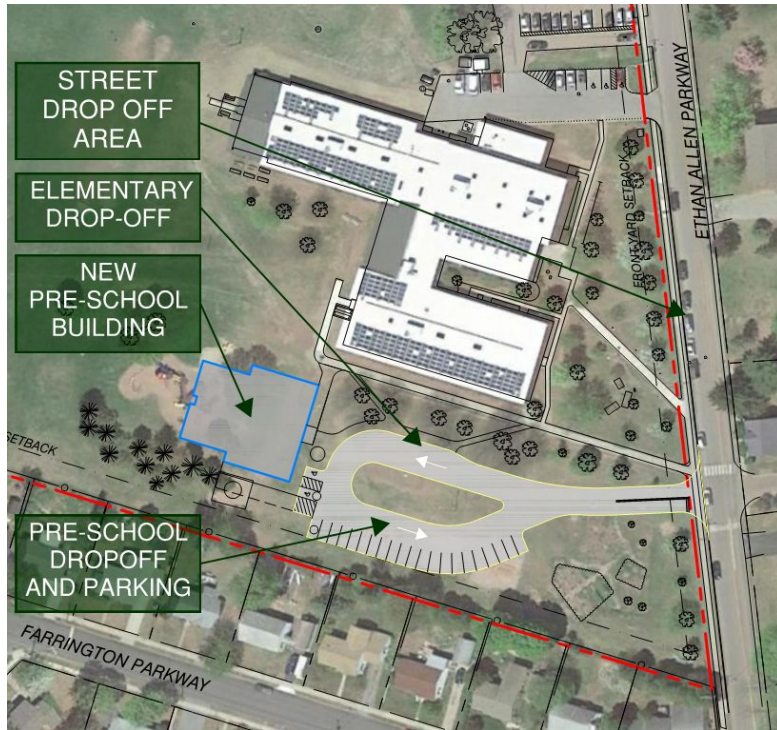
NORTH END EARLY ED PROGRAM ENHANCEMENTS

- ❖ Five Classrooms
 - Natural Lighting
 - Teacher Offices
 - Age Appropriate Accessibility
- ❖ Motor Room
- ❖ Support Spaces
- ❖ 1:1 Spaces
- ❖ Staff Room
- ❖ Satellite Kitchen



N  FIRST FLOOR PLAN
N.T.S.

NORTH END EARLY ED PROGRAM ENHANCEMENTS



- ❖ Vehicle Circulation Improvements
- ❖ Adequate Parking for Pre-K Parent drop-off
- ❖ Pedestrian/Bike Circulation
 - Improved Sidewalk/Crosswalk Safety
- ❖ Preservation of Mature Shade Trees & Orchard

