

SOUTH END EARLY ED CENTER

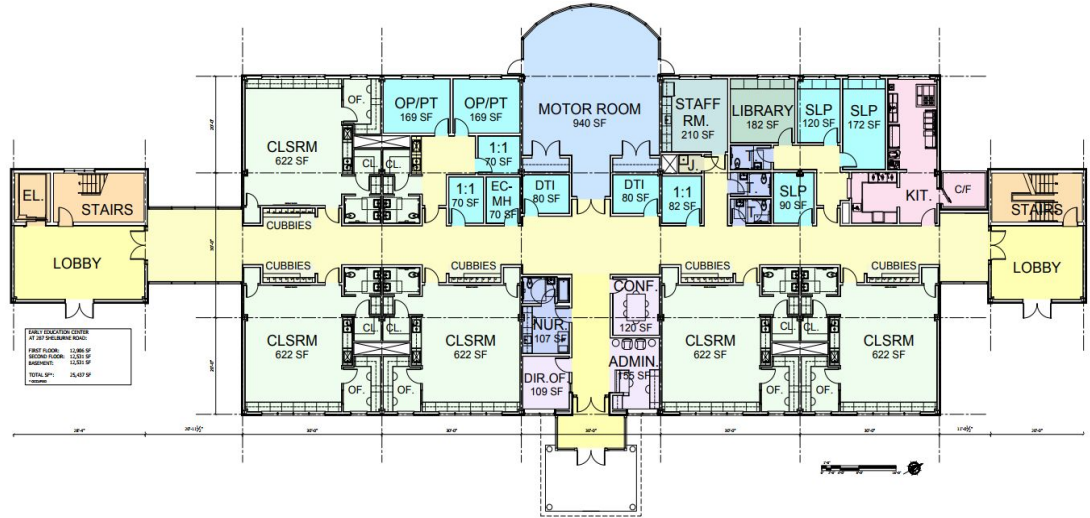
287 Shelburne Road

- ❖ Early Ed Center
- ❖ Stand Alone/Self Sufficient 2 Story Building
- ❖ Pre K on Ground Level
- ❖ Energy Efficient Construction
 - LED Lighting
 - Heat Recovery Ventilation
 - Air Conditioning
 - Triple Glazed Windows
 - Well Insulated Building Envelope
- ❖ Sustainable Architecture
 - Recycled Materials
- ❖ Latest in Building Technology
- ❖ Access Controls/Surveillance



SOUTH END EARLY ED CENTER PROJECT ENHANCEMENTS

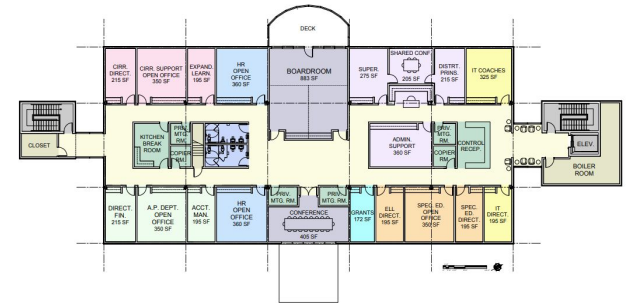
- ❖ Five Classrooms
- ❖ Motor Room
- ❖ 1:1 Spaces
- ❖ Staff Room
- ❖ Full Service Kitchen
- ❖ Conference Rooms
- ❖ Storage Space
- ❖ Nurse & Shower
- ❖ Support Spaces
 - Occupational/Physical Therapy Intervention
 - Mental Health Services
 - Speech/Language Pathology



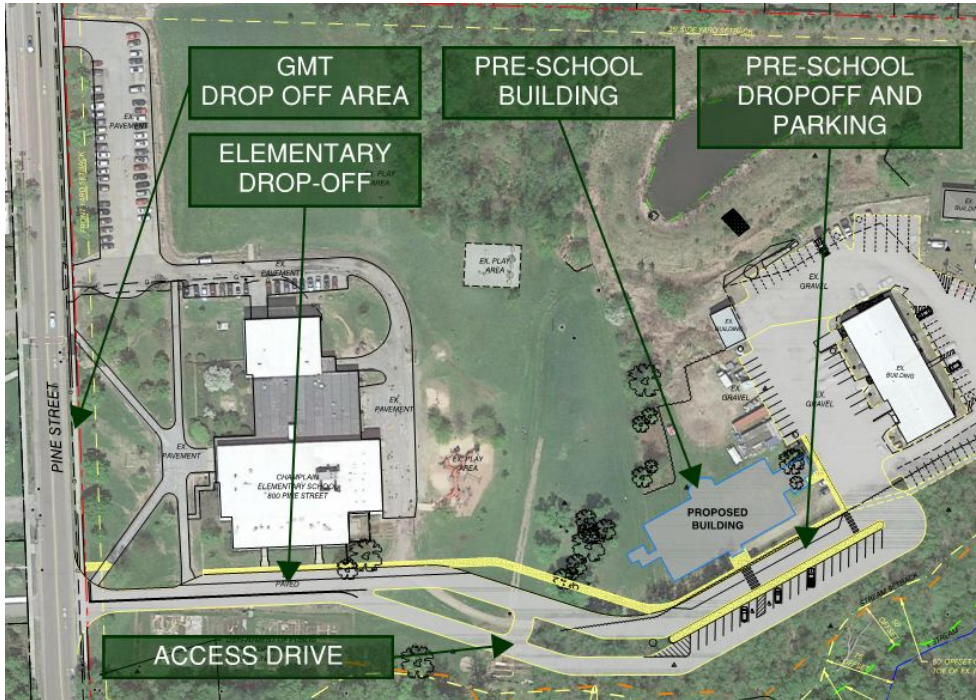
① FIRST FLOOR NEW WORK PLAN
1/4" = 1'-0"

SECOND FLOOR CENTRAL OFFICE ADMINISTRATION

- ❖ Moving central office functions allows 150 Colchester Ave to become temporary classroom space that will be needed during subsequent projects
 - Temporary classroom space options are limited and expensive
- ❖ Cost to build is cheaper than leasing in long run
 - BSD engaged a realtor for an analysis of lease space options
 - Leasing was as costly as new construction without the long term benefit
 - Parking costs approached \$100/employee/month at some locations
- ❖ Addresses current central office staff space constraints
- ❖ Space for training room / board meeting room
- ❖ Improved Safety & Accessibility
- ❖ Best use of District Resources



CHAMPLAIN STUDENT DROP OFF



Vehicle Circulation

- Adequate Parking for Pre-K Parent Drop-off
- New Safe and Secure Champlain Student Drop-off
 - Addressing Congestion Issues on Pine Street

Pedestrian/Bike Circulation

- Provides Access from Shelburne Road
- Improved Sidewalk/Crosswalk Safety