

**BURLINGTON HIGH SCHOOL**  
MASSING DIAGRAM: SCHEME #1  
MEMORIAL AUDITORIUM AND FIREHOUSE REMAIN

TOTAL SQUARE FOOTAGE: 251,323 SF  
TOTAL PARKING SQ. FOOTAGE: 38,314 (130 CARS)

#1 - ADMINISTRATION AND CLASSROOMS  
- ADMINISTRATION  
- CLASSROOMS  
- SPECIAL EDUCATION  
- FINE ARTS  
- LABS  
- BURLINGTON TECHNICAL CENTER

- SQUARE FOOTAGE: 207,441 SF

#2 - CAFETERIA AND KITCHEN  
- SQUARE FOOTAGE: 10,500 SF

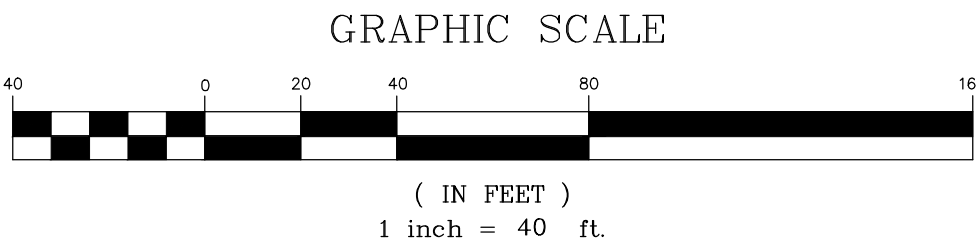
#3 - ASSEMBLY SPACES  
NEW ASSEMBLY SPACES: 15,000 SF  
RENOVATION EXISTING SPACES: 18,382 SF

- SQUARE FOOTAGE: 33,382 SF

NOTE: PROGRAM INFORMATION AND MASSING DIAGRAMS ARE PRELIMINARY AND BASED ON DATA FROM PREVIOUS STUDIES. MASSING DIAGRAM INDICATE ONE POSSIBLE CONCEPT OF HOW THE PROGRAM SQUARE FOOTAGE COULD FIT ON THE SITE AND INTENDED ONLY FOR PURPOSES OF ANALYZING FEASIBILITY FOR SITE SELECTION. THESE DIAGRAMS ARE NOT DESIGNS, BUILDING PLANS OR BUILDING SECTIONS.



LEGEND	
	APPROXIMATE PROPERTY LINE
	APPROXIMATE SETBACK LINE
	EXISTING CONTOUR
	EXISTING CURB
	EXISTING PAVEMENT
	EXISTING ELECTRIC
	EXISTING FORCE MAIN
	EXISTING GAS
	EXISTING STORM
	EXISTING GRAVITY SEWER
	EXISTING COMBINED STORM/SEWER
	EXISTING TELEPHONE
	EXISTING WATER
	EXISTING SEWER MANHOLE
	EXISTING STORM MANHOLE
	EXISTING CATCH BASIN
	EXISTING HYDRANT
	EXISTING SHUT OFF
	EXISTING UTILITY POLE
	EXISTING LIGHT POLE
	EXISTING GUY WIRE/POLE
	EXISTING SIGN



PROGRESS PLAN  
OCTOBER 7, 2021

COLIN P. LINDBERG,  
A.I.A.  
208 FLYNN AVENUE, SUITE 2B  
BURLINGTON, VT 05401  
802-364-4930

CIVIL ENGINEERING ASSOCIATES, INC.  
10 MANSFIELD AVENUE, SOUTH BURLINGTON, VT 05403  
P: 802-364-5233  
Web: www.coea-ct.com

SITE ENGINEER:

Sheet Name:  
GATEWAY SITE MASSING  
DIAGRAM WITH MEMORIAL  
AUDITORIUM

Project Owner:  
BURLINGTON SCHOOL DISTRICT  
150 COLCHESTER AVE., BURLINGTON, VT 05401

Project:  
BHS RELOCATION

Scale  
AS NOTED

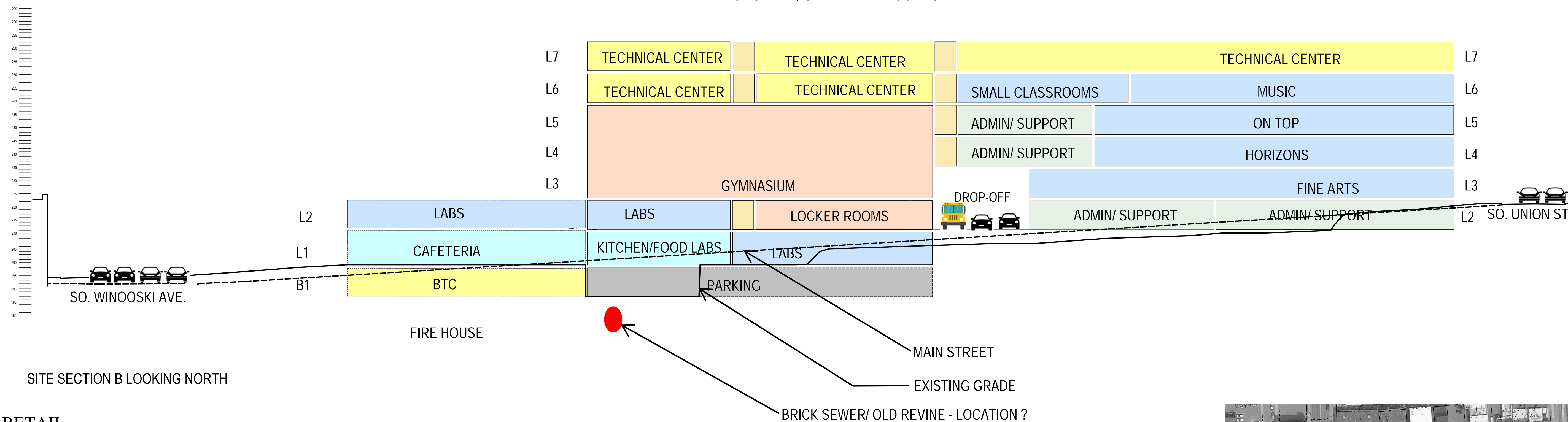
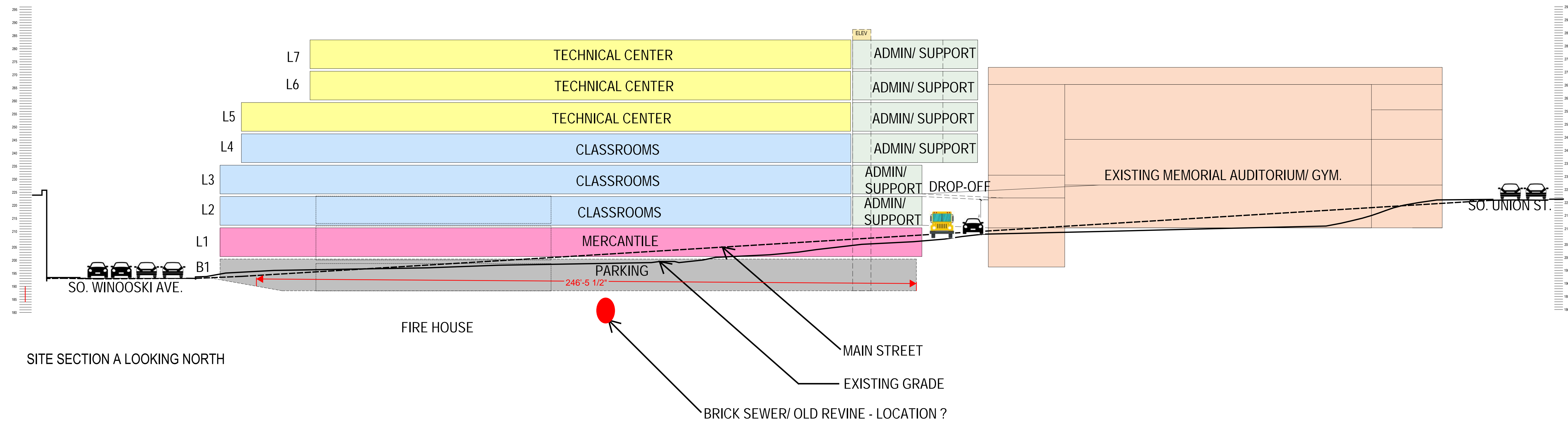
Date  
-

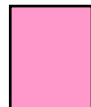




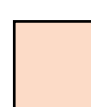


# Date Revision

CEA PROJ. 20111.06

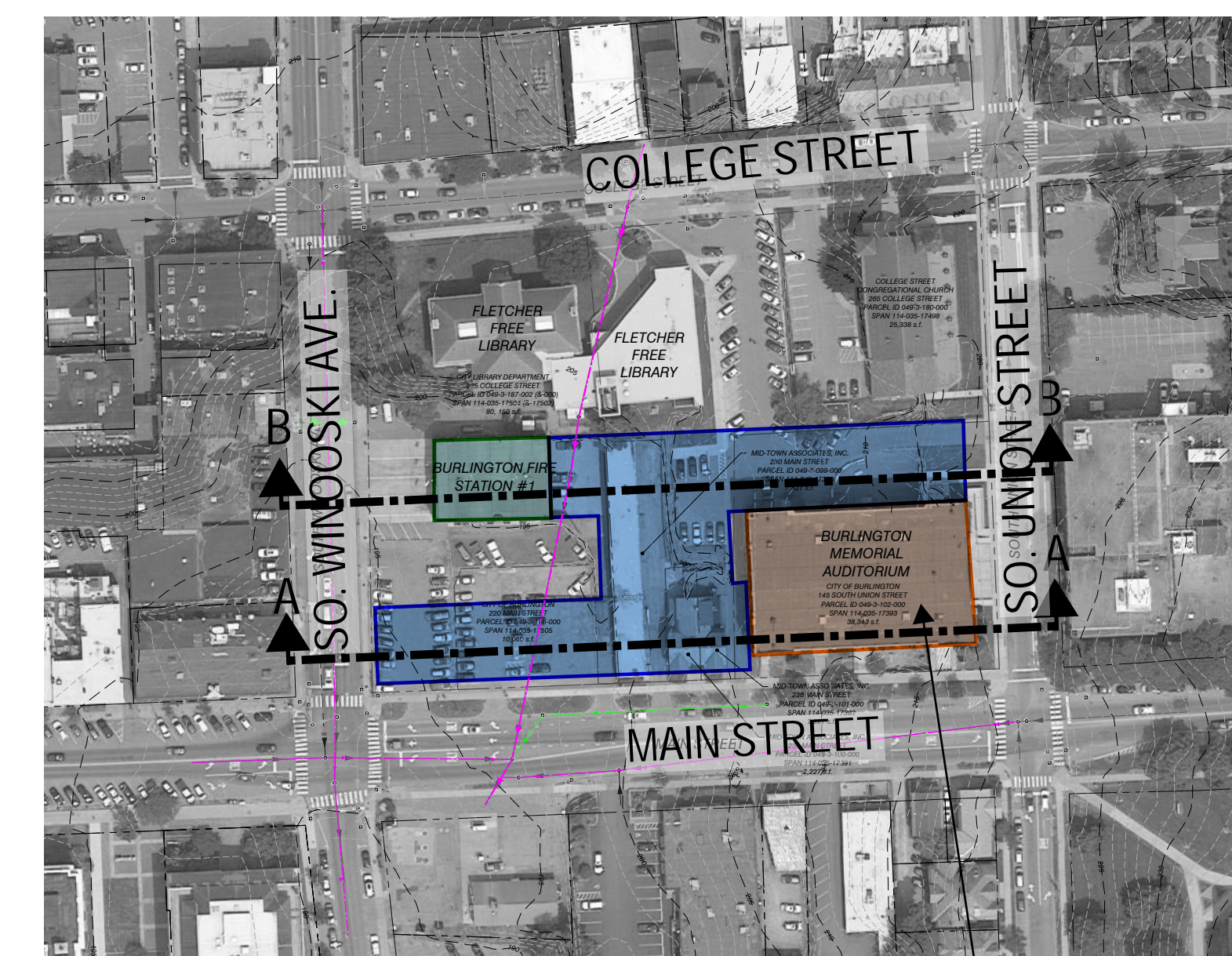
C1A





- |   |                    |
|---|--------------------|
|  | RETAIL             |
|  | ADMINISTRATION     |
|  | CAFETERIA/ KITCHEN |
|  | CLASSROOM WING     |
|  | AUDITORIUM/ MUSIC  |
|  | GYMNASIUM          |
|  | TECHNICAL CENTER   |
|  | PARKING            |

NOTE: PROGRAM INFORMATION AND MASSING DIAGRAMS ARE PRELIMINARY AND BASED ON DATA FROM PREVIOUS STUDIES. MASSING DIAGRAMS INDICATE ONE POSSIBLE CONCEPT OF HOW THE PROGRAM SQUARE FOOTAGE COULD FIT ON THE SITE AND INTENDED ONLY FOR PURPOSES OF ANALYZING FEASIBILITY FOR SITE SELECTION. THESE DIAGRAMS ARE NOT DESIGNS, BUILDING PLANS OR BUILDING SECTIONS.



MEMORIAL AUDITORIUM TO REMAIN

**COLIN P. LINDBERG,  
A.I.A.**

**208 FLYNN AVENUE, SUITE 2B  
BURLINGTON, VT 05401  
802-864-4950**

## SITE SECTION MASSING DIAGRAMS WITH MEMORIAL AUDITORIUM

**BURLINGTON SUPERVISORY DISTRICT**  
**150 COLCHESTER AVENUE, BURLINGTON, VERMONT**

**BURLINGTON HIGH SCHOOL  
AND TECHNICAL CENTER  
MAIN STREET, BURLINGTON, VERMONT 05408**

scale

ate

Date	Revision
------	----------

## A2.A

## PROGRESS SET



BURLINGTON HIGH SCHOOL

MASSING DIAGRAM: SCHEME #2

HISTORIC FIRE HOUSE TO REMAIN

TOTAL SQUARE FOOTAGE: 371,835 SF

TOTAL PARKING SQ. FOOTAGE: 59,753 (225 SPOTS)

#1 - ADMINISTRATION AND CLASSROOMS

- ADMINISTRATION
- CLASSROOMS
- SPECIAL EDUCATION
- FINE ARTS
- LABS
- BURLINGTON TECHNICAL CENTER

- SQUARE FOOTAGE: 326,609 SF

#2 - CAFETERIA AND KITCHEN

- SQUARE FOOTAGE: 10,500 SF

#3 - ASSEMBLY SPACES

- GYMNASIUM WITH MUSIC ABOVE
- AUDITORIUM WITH LABS ABOVE

- SQUARE FOOTAGE: 34,726 SF

NOTE: PROGRAM INFORMATION AND MASSING DIAGRAMS ARE PRELIMINARY AND BASED ON DATA FROM PREVIOUS STUDIES. MASSING DIAGRAM INDICATE ONE POSSIBLE CONCEPT OF HOW THE PROGRAM SQUARE FOOTAGE COULD FIT ON THE SITE AND INTENDED ONLY FOR PURPOSES OF ANALYZING FEASIBILITY FOR SITE SELECTION. THESE DIAGRAMS ARE NOT DESIGNS, BUILDING PLANS OR BUILDING SECTIONS.



LEGEND

- APPROXIMATE PROPERTY LINE
- APPROXIMATE SETBACK LINE
- EXISTING CONTOUR
- EXISTING CURB
- EXISTING PAVEMENT
- EXISTING ELECTRIC
- EXISTING FORCEMAIN
- EXISTING GAS
- EXISTING STORM
- EXISTING GRAVITY SEWER
- EXISTING COMBINED STORM/SEWER
- EXISTING TELEPHONE
- EXISTING WATER
- EXISTING SEWER MANHOLE
- EXISTING STORM MANHOLE
- EXISTING CATCH BASIN
- EXISTING HYDRANT
- EXISTING SHUT OFF
- EXISTING UTILITY POLE
- EXISTING LIGHT POLE
- EXISTING GUY WIRE/POLE
- EXISTING SIGN

GRAPHIC SCALE



( IN FEET )  
1 inch = 40 ft.

PROGRESS PLAN  
OCTOBER 7, 2021

COLIN P. LINDBERG,  
A.I.A.

208 FLYNN AVENUE, SUITE 2B  
BURLINGTON, VT 05401  
802-364-4930



CIVIL ENGINEERING ASSOCIATES, INC.  
10 MANSFIELD AVENUE, SOUTH BURLINGTON, VT 05403  
P: 802-364-4930  
Web: www.coea-ct.com

SITE ENGINEER:

GATEWAY SITE MASSING  
DIAGRAM WITHOUT  
MEMORIAL AUDITORIUM

Project Owner: BURLINGTON SCHOOL DISTRICT  
150 COLCHESTER AVE., BURLINGTON, VT 05401

Project: BHS RELOCATION

Scale

AS NOTED

Date

-

# Date

Revision

CEA PROJ. 20111.06

C1B



