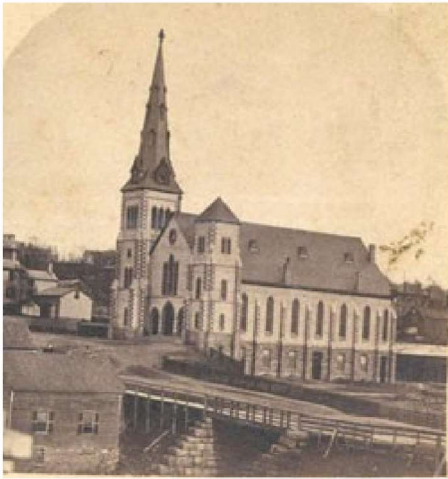


Congregational Church and the Ravine - Then and Now  
(The Congregational Church is located at the corner of College Street and South Union Street)



Congregational Church, c. 1866  
<http://www.uvm.edu/~hp206/2002-1869/rawillia/congregationalchurch/congregationalchurch.html>



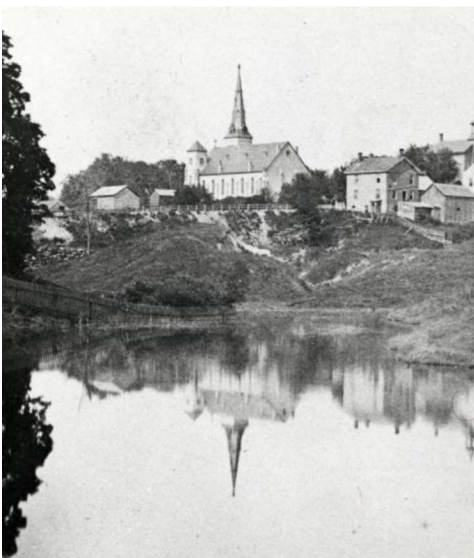
Congregational Church - On College Street looking East  
Google Maps streetview image 2021



View west on College Street across ravine, c. 1866  
Burlington Then and Now Historical Photo Exhibit:  
<https://www.burlingtonvt.gov/Burlington150/History>



View west on College Street  
Google Maps streetview image 2021



Congregational Church and pond, c. 1870  
Burlington Then and Now Historical Photo Exhibit:  
<https://www.burlingtonvt.gov/Burlington150/History>



Corner of Main Street and South Winooski Street - looking Northeast  
Google Maps streetview image 2021