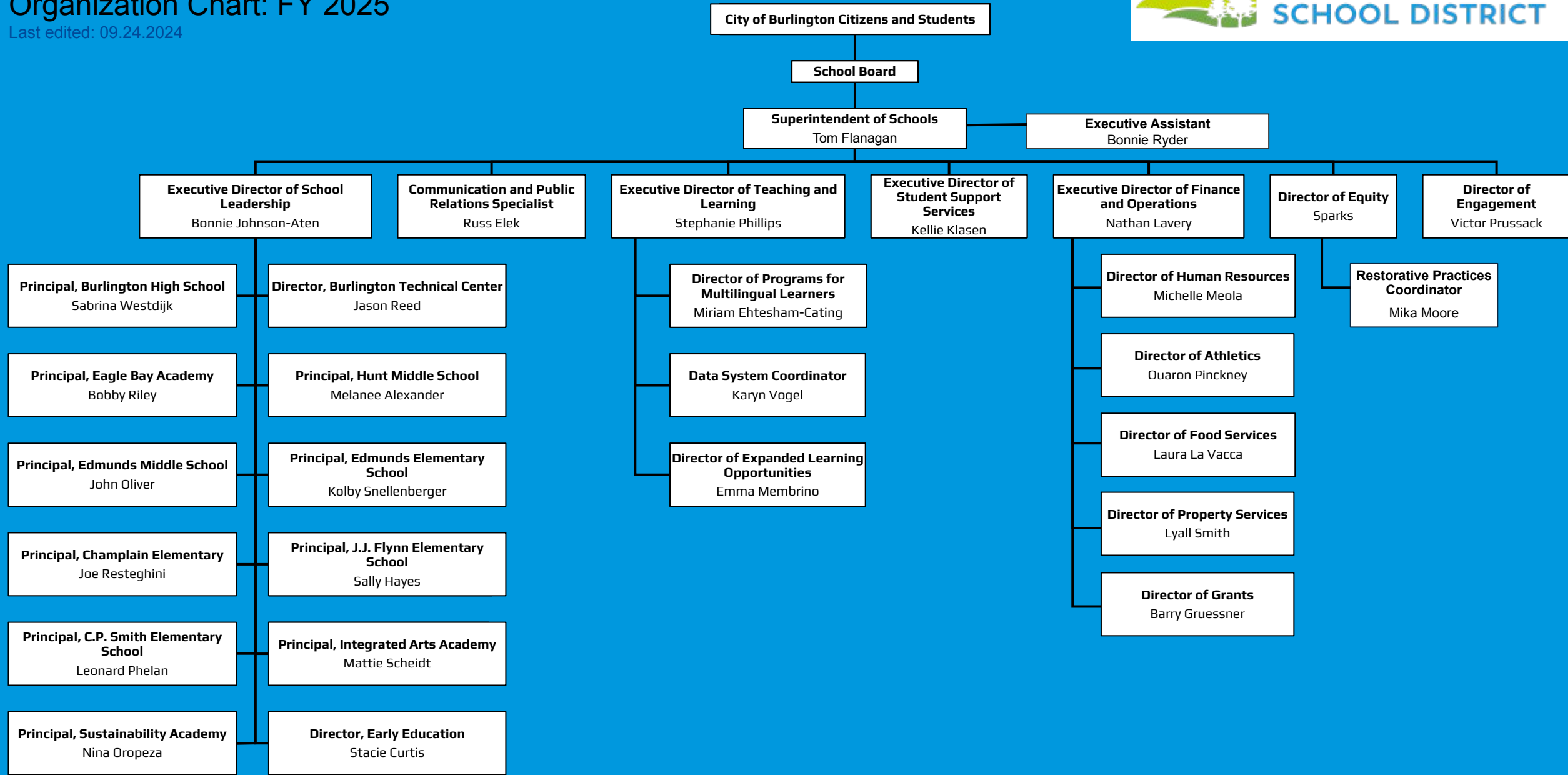


District Cabinet

Organization Chart: FY 2025

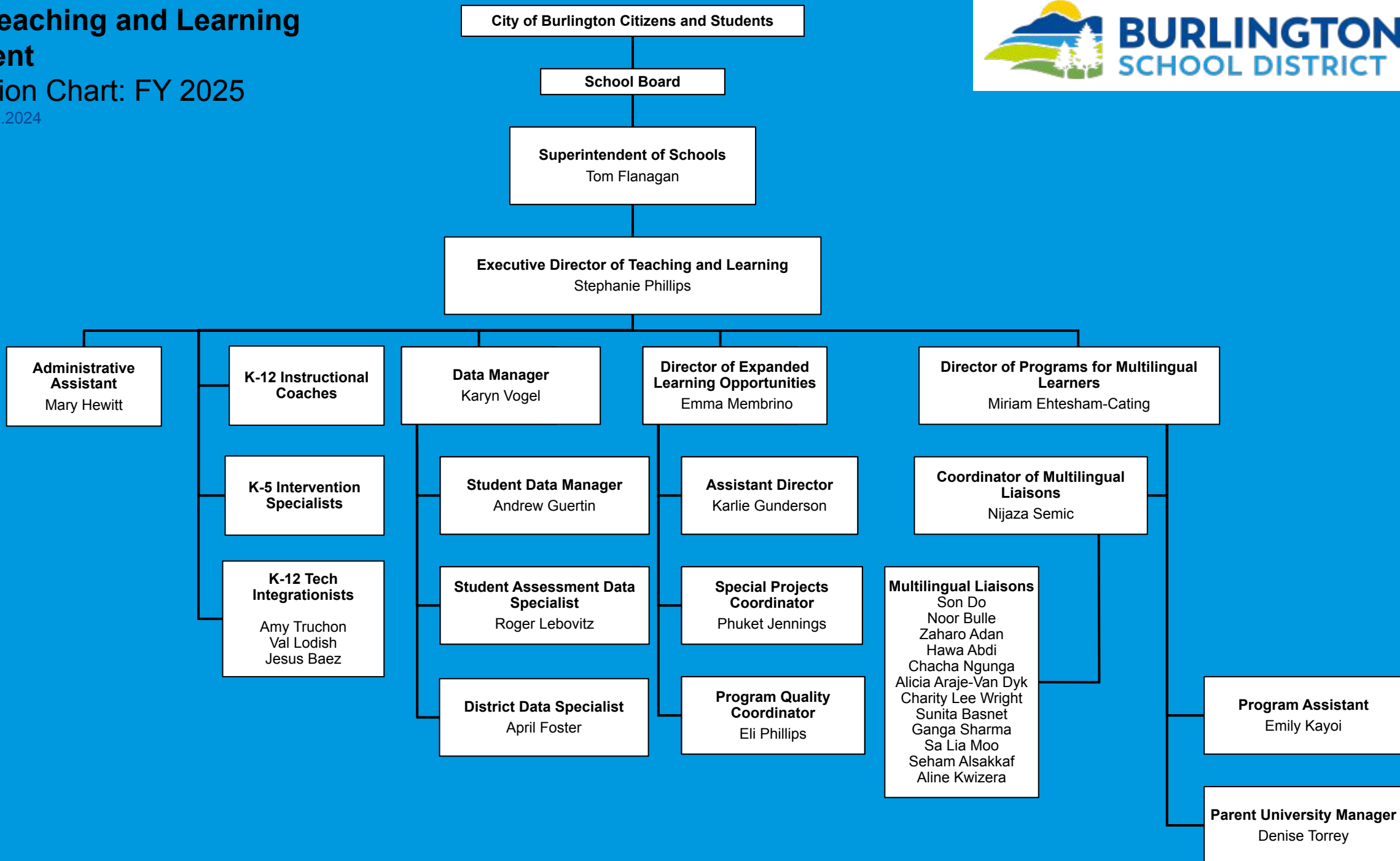
Last edited: 09.24.2024



District Teaching and Learning Department

Organization Chart: FY 2025

Last edited: 09.24.2024



District Finance, Operations, and Human Resources Department

Organization Chart: FY 2025

Last edited: 09.24.2024



City of Burlington Citizens and Students

School Board

Superintendent of Schools
Tom Flanagan

Executive Director of Finance and Operations
Nathan Lavery

Director of Human Resources
Michelle Meola

Network Admin
Mary Keenan

Business Manager
Katie Glover

Director of Grants
Barry Gruessner

Director of Food Services
Laura La Vacca

Director of Property Services
Lylla Smith

Director of Student Activities
Quaron Pinckney

Associate Director
John Fontaine I

Leave Specialist
Danielle Larsen

Benefits Specialist
Wayne Hazard

HR Office Admin Coordinator
Mark Benjamin

HR Office Admin Coordinator Assistant
Andrea Kutsup

Network Engineer
Jason Evans

Tech Support Specialists
Dwight Brown
Jeff Bower
Skip Bennett
David Martin
Clayton Ellwood

Payroll
Susan Bergeron
Kristy Armell

Staff Accountant
Meredith Irish

Purchasing/AP
Tina Desautels

Medicaid Clerks
Elizabeth Oliver
Lisa Kuehn

Financial Services Assistant
Becky Hart

Operations Manager
Dinah Larsen

Administrative Assistant
Jane Hondal

Food Ed | Youth Outreach
Sarah Heusner

Executive Chef
Shannon Anderson

Assistant Director
Dean Williams

Operational Manager
Miguel Caez

Bus Transportation
Kyle Toof

Office Executive Assistant
Deb Lord

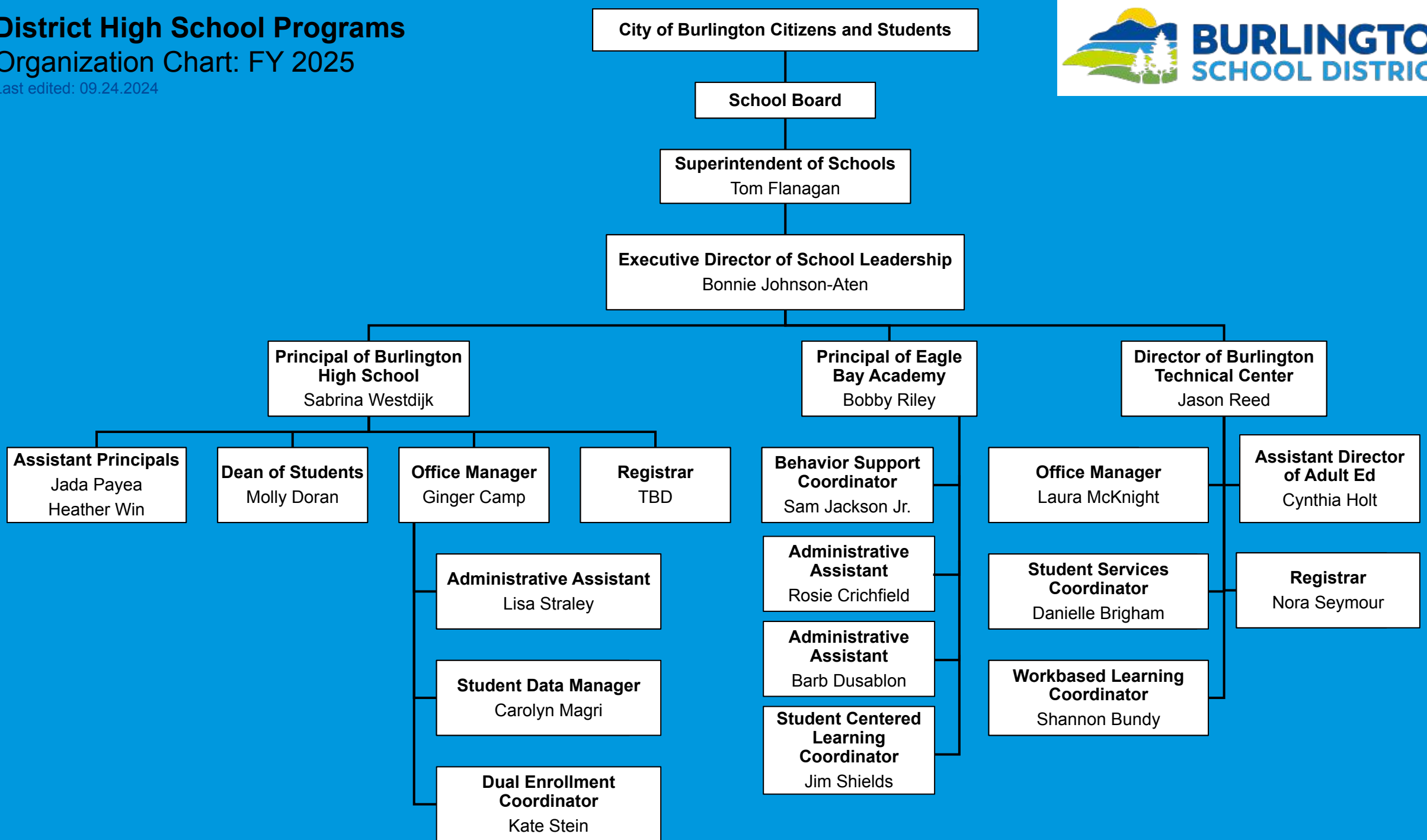
Athletic Coordinator
Jeff Hayes

Athletic Coordinator
Ryan Hayes

District High School Programs

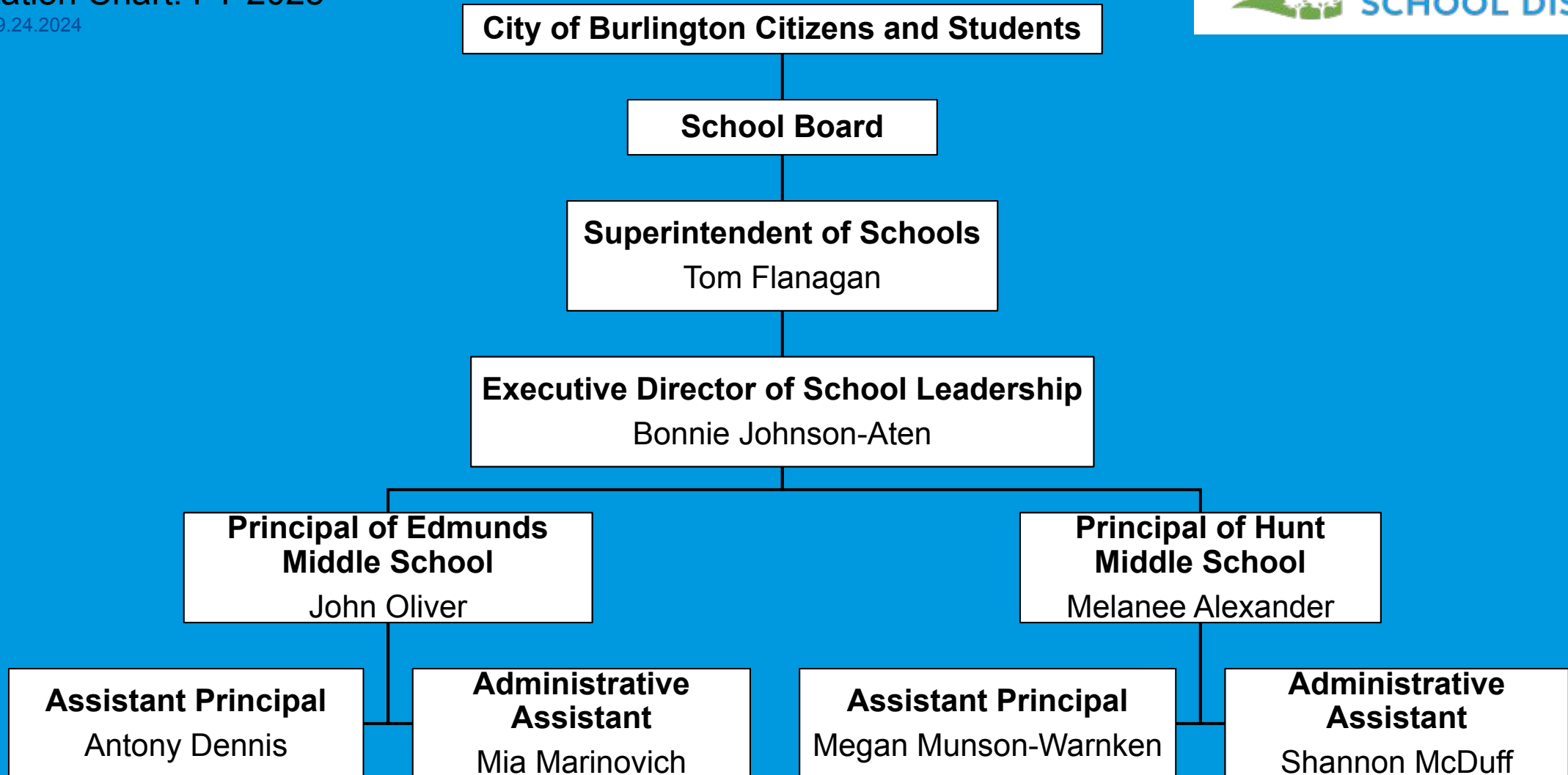
Organization Chart: FY 2025

Last edited: 09.24.2024



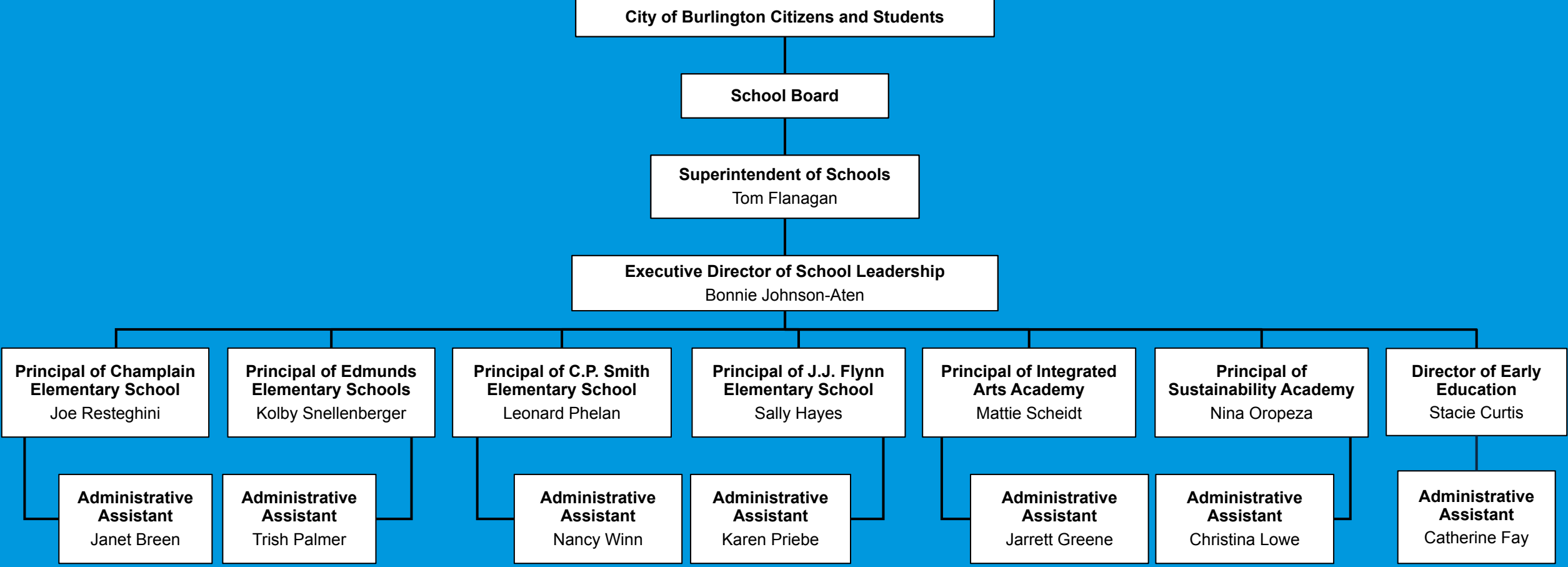
District Middle Schools Organization Chart: FY 2025

Last edited: 09.24.2024



District Elementary Schools and PreK Organization Chart: FY 2025

Last edited: 09.24.2024



District Equity Offices

Organization Chart: FY 2025

Last edited: 09.24.2024



City of Burlington Citizens and Students

School Board

Superintendent of Schools
Tom Flanagan

Director of Equity
Sparks

Equity Instructional
Leader
Autumn Bangoura

HHB Coordinator
Teresa Giallorenzo

Restorative Practices
Coordinator
Mika Moore

Office Administrative
Coordinator
Tim Verstandig

Student Support Services Organization Chart: FY 2025

Last edited: 09.24.2024



City of Burlington Citizens and Students

School Board

Superintendent of Schools
Tom Flanagan

Executive Director of Student Support Services
Kellie Klasen

**Associate Director
K-5**
Jennifer Doyle

**Associate Director
6-12**
Erika Saunders

**Special Education
Liaison**
Sally Martin

**Lead Admin
Assistant**
Wilhelmenia Kirk

Admin Assistant
Laurie Burrington